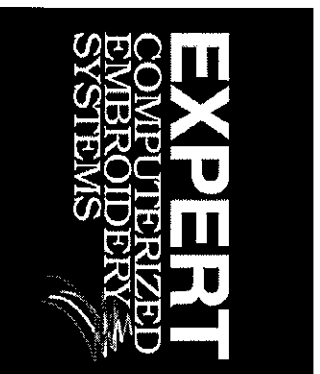


EXPERT STITCH MANAGER

Software to help you manage your design library and your production

Instruction manual **(tentative version)**



-Index-

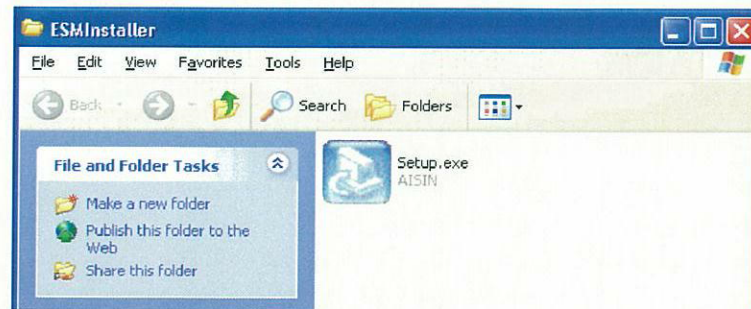
I . INSTALLATION

II . OPERATING PROCEDURE

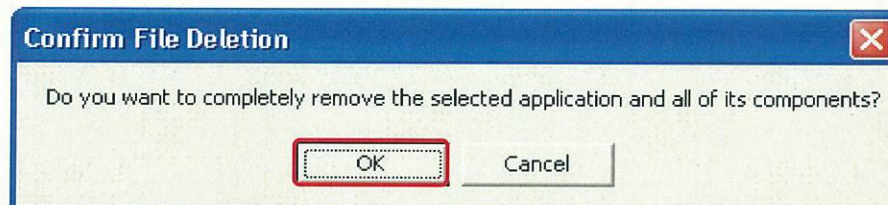
- 1. Starting up the software**
- 2. Setting the embroidery machine**
- 3. Selection of embroidery data**
- 4. Transfer the embroidery data**
- 5. Monitor of on-going embroidery**
- 6. Finish the software**
- 7. Other information**
- 8. Setting of embroidery machine**

I. INSTALLATION

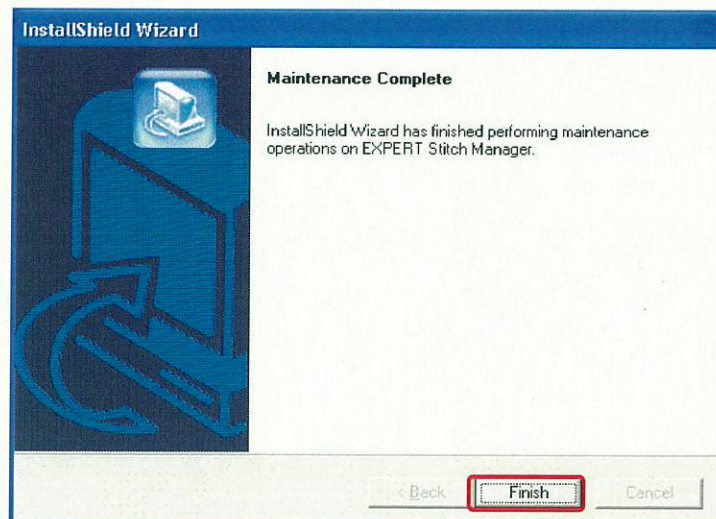
1. Start installation by double-click the Setup.exe



In case the below dialogue shows up, it means installation is done. When the older version has been installed, uninstall of the older version will start by clicking OK

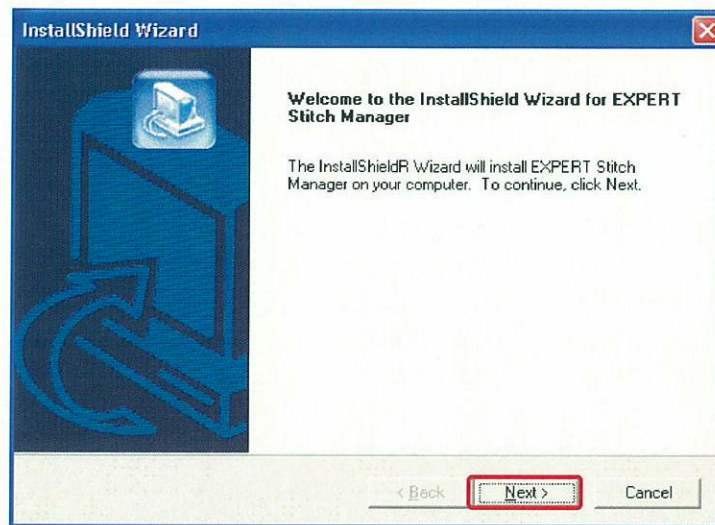


When uninstall is finished, the below dialogue will be shown. Close the window by clicking Finish

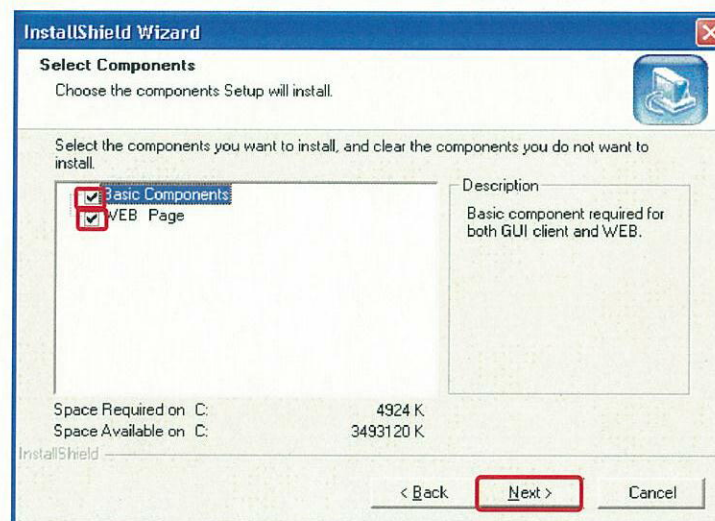


Please click Setup.exe again.

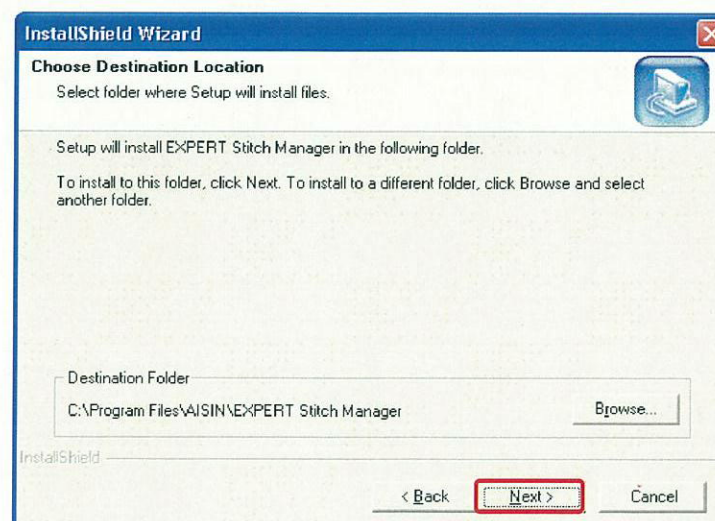
2. When install wizard boots up, please operate according to the message instruction



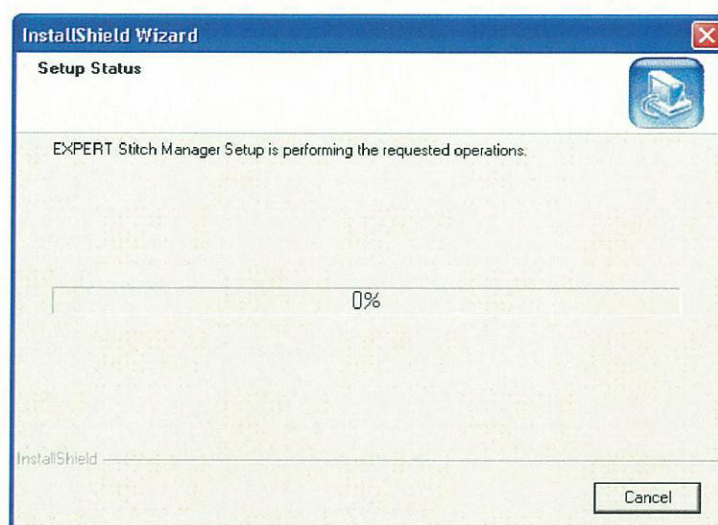
3. Select install component



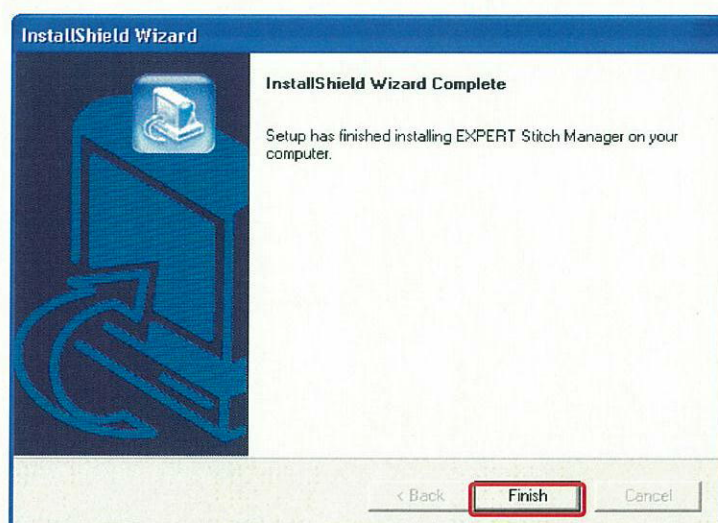
4. Select the destination of installation



5. Start installation



6. Finish installation



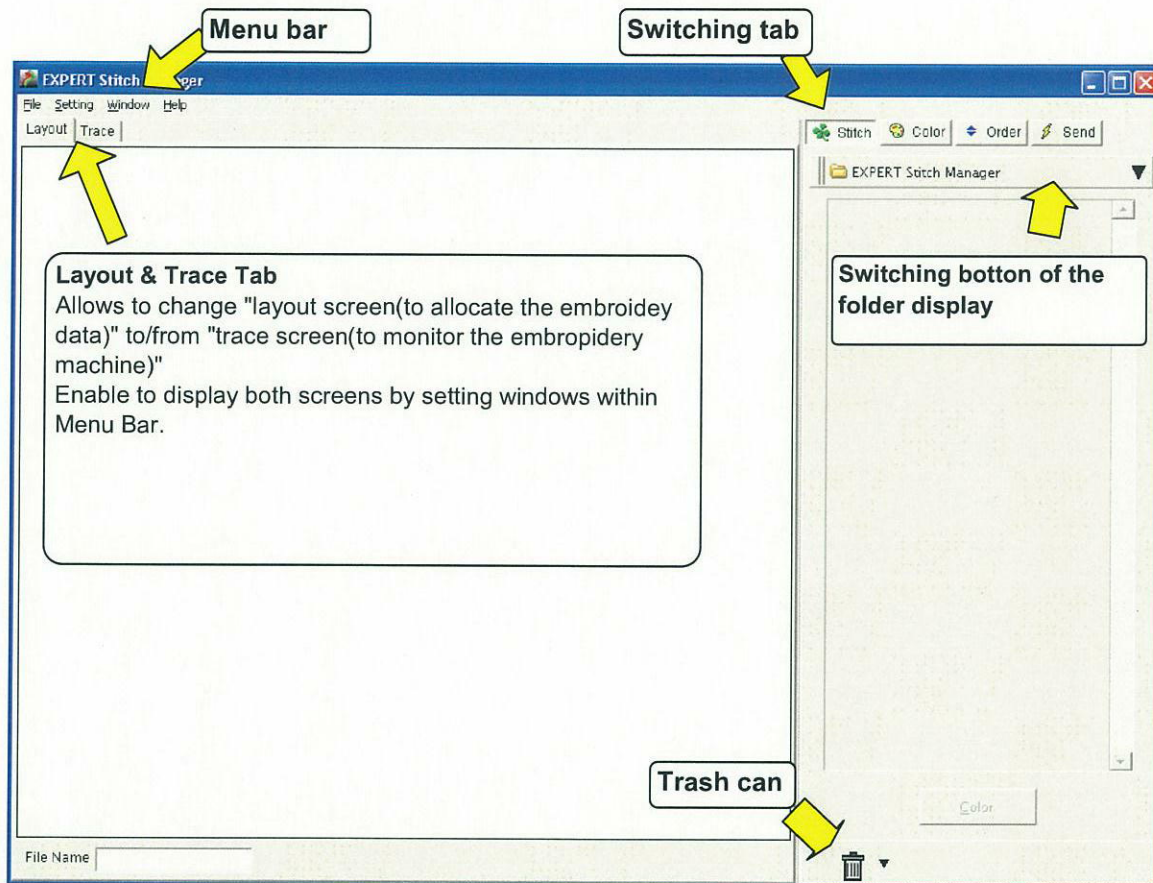
Icon of the EXPERT STITCH MANAGER will be generated on the selected destination.



II. OPERATING PROCEDURE

1) Starting up the software

-- Only applicable to ESP9100NET series model



Menu bar

- [File] [Exit] --- Finish the software
- [Setting] [Stitch & Machine Color]---Set the spool colors on the embroidery machine
 - [Back Color]---Select back color of window
 - [Recent Files]---Setting of record of transferred data
 - [Serial Port]---Setting of port, communication speed
 - [Rescan TCP/IP port]---execute re-connection of the machines by using LAN port
- [Window] [Tab Layout]---Allocate layout screen and trace screen by using tab
 - [Horizontal Tile]---Allocate layout screen and trace screen side by side
 - [Vertical Tile]---Allocate layout screen and trace screen up and down.

Switchng Tab

- [Stitch]---Display and selection of drive folder
 - Review and selection of embroidery data
- [Color]---Setting and confirmation of thread color
- [Order]---Display and change stitch sequence of selected embroidery data
- [Send]---Transfer embroidery data and monitor on-going

Trash can

- [Delete]---Delete data
- [Delete All]---Delete all data

2. Setting the embroidery machine

* Please implement network setting before the connection
(please refer to "8. Setting of embroidery machine".)

1) Connection using TCP/IP(LAN) port

Turn on all the machines connected before booting up ESM. When booting up ESM, it will automatically search and connect to the machines in the network automatically. In case, turn on the power of the machines after booting up ESM, execute rescan TCP/IP from the menu bar, then the machines will be connected automatically.

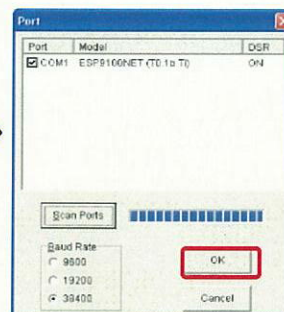
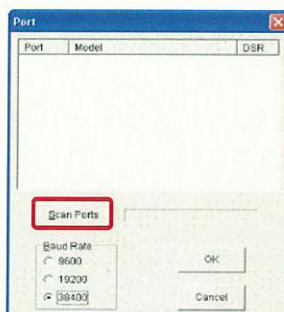
Rescan TCP/IP port



2) Connection using Serial(COM) port

Click Serial port from the menu bar. Scan according to the communication speed of the embroidery machine (Baud rate). Setting will be finished by pressing OK button when the embroidery displayed.

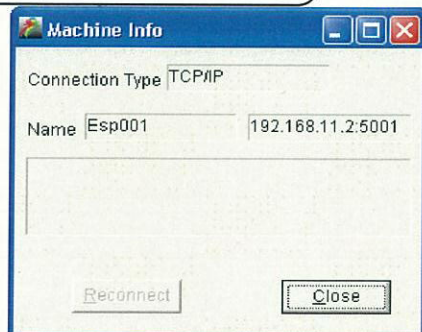
Serial port



3) Confirmation of connection

It is possible to check the connecting status by clicking Machine icon within Sending tab

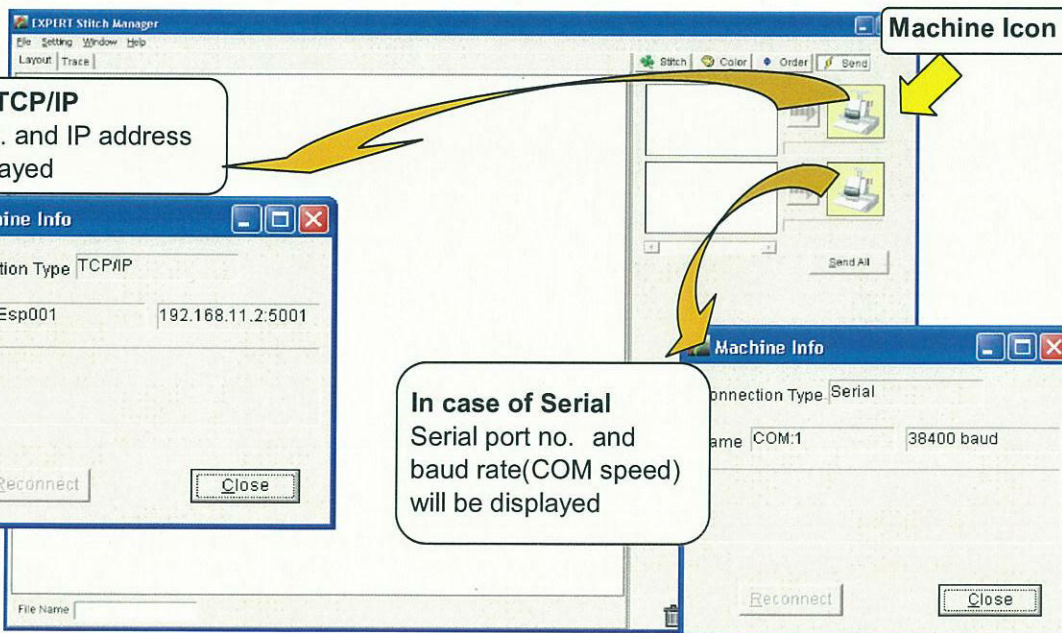
In case of TCP/IP
Machine no. and IP address
will be displayed



In case of Serial
Serial port no. and
baud rate(COM speed)
will be displayed

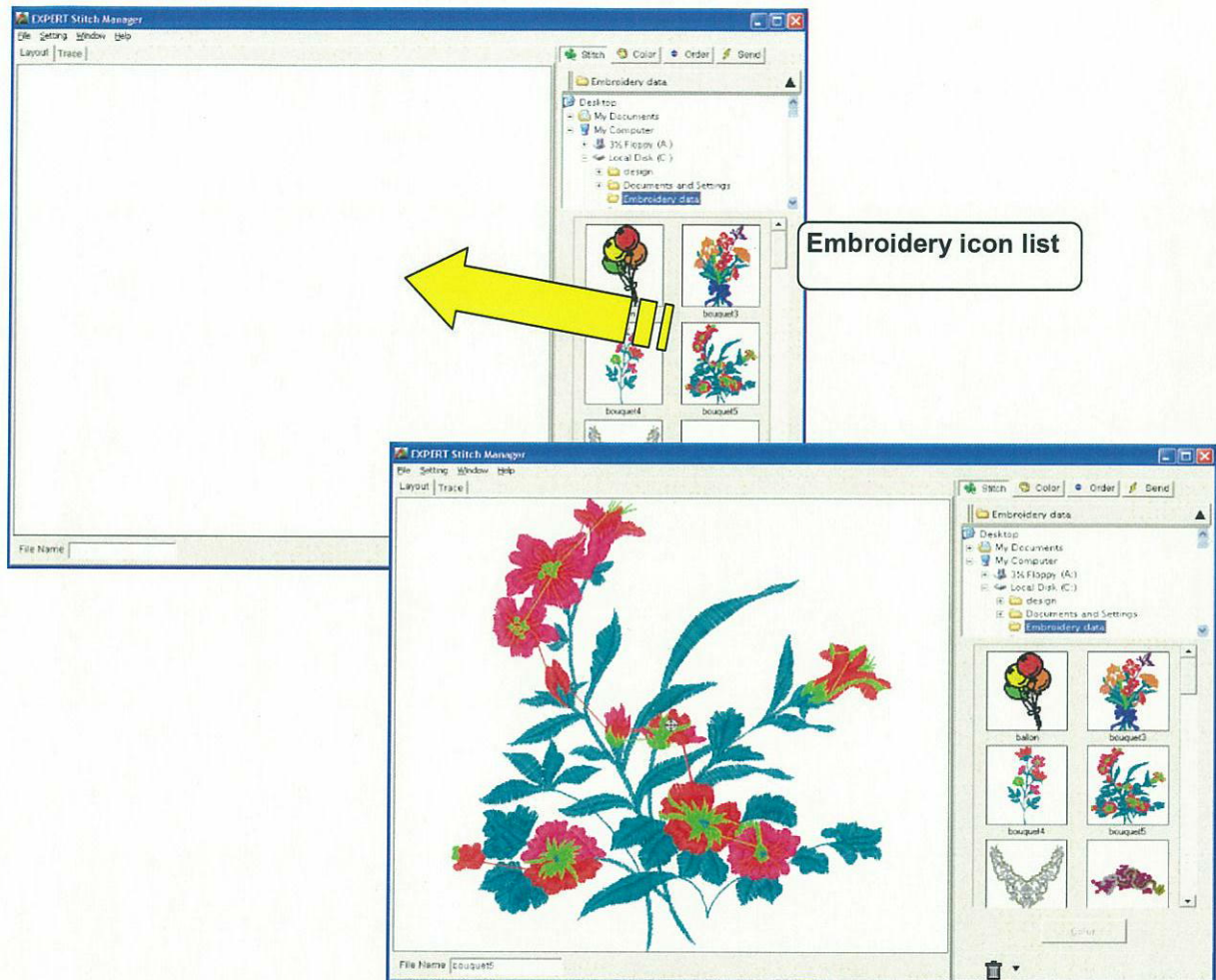


Machine Icon

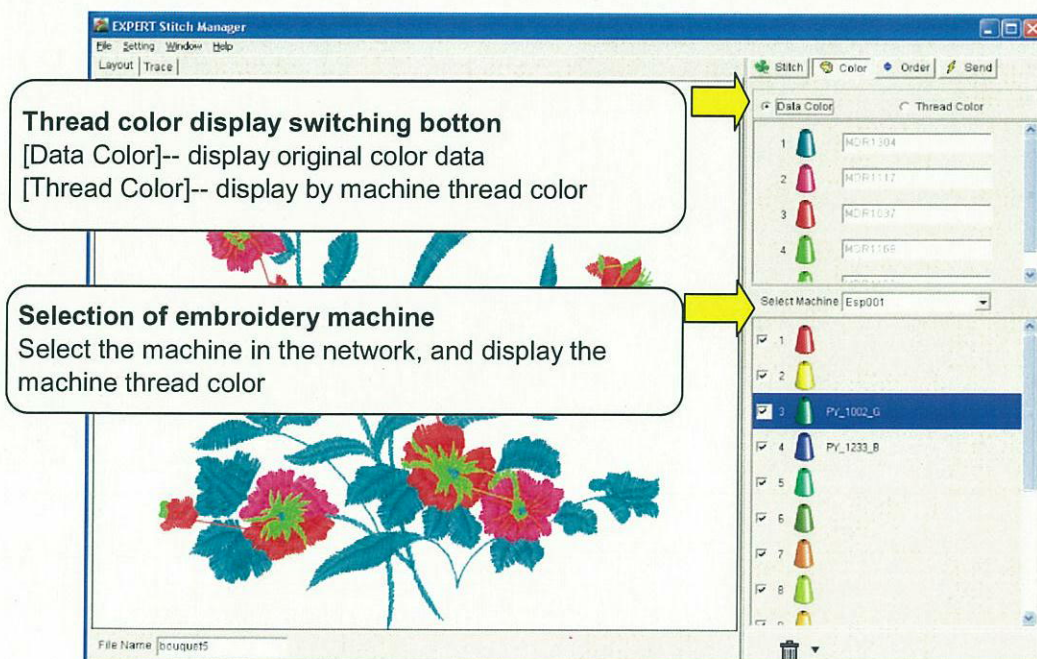


3. Selection of embroidery data

1) Switching to Layout screen by "dragging & dropping" from embroidery icon list



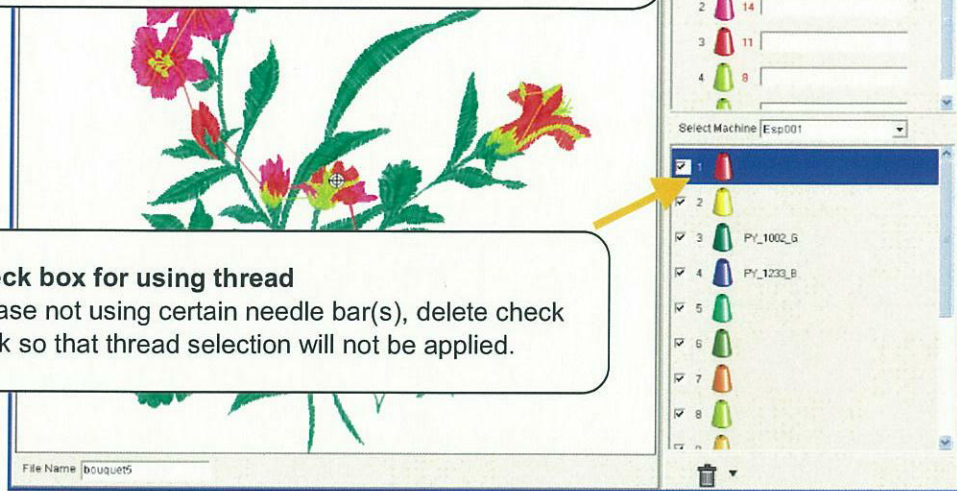
2) Confirmation and modification of thread information
Click [Color]



When selecting [Thread Color], allocate the embroidery data color automatically and display the number in red on the right side of the needle bar number. Display the embroidery data according to the selected color.

Check box for using thread

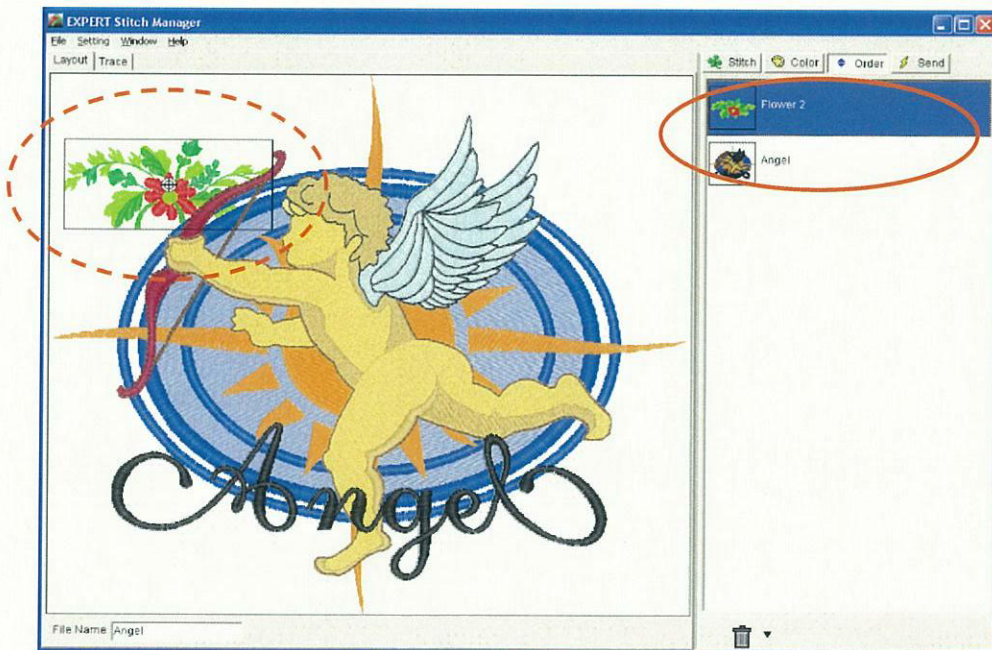
In case not using certain needle bar(s), delete check mark so that thread selection will not be applied.



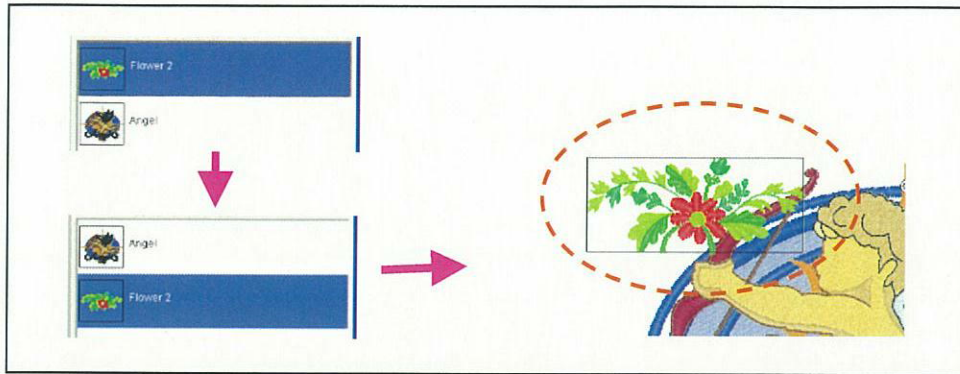
3) Change stitch sequence

Click [Order]

Stitch sequence of the selected multiple embroidery data is displayed.



To change the sequence, drag the embroidery data, so the first item to stitch is at the top of the list.



4) Set the file name for the embroidery machine

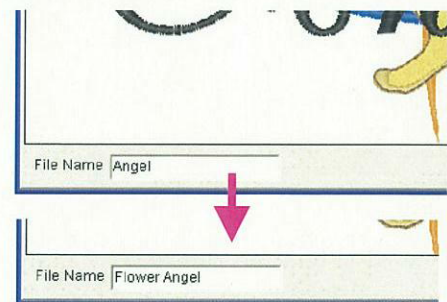
It is available to set the data name for the embroidery machine that will be displayed on the machine's console after transferring.

It is valid in the operation [Stitch], [Order] and [Send]

The file name that was selected first

is shown in the [File name] box at the bottom of screen.

Input new name in the [File name] box.

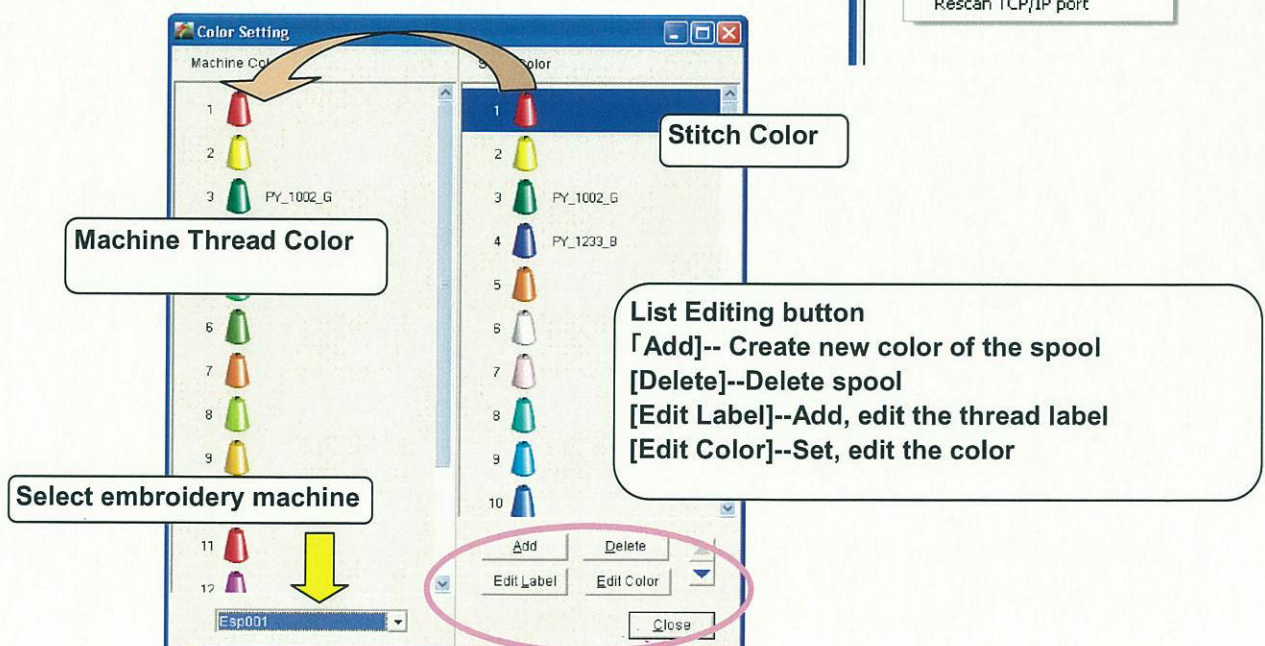


Note) Thread Color setting of the embroidery machine

Execute machine thread color setting as needed

Color setting dialogue will show by clicking "Stitch & Machine Color" from the menu bar

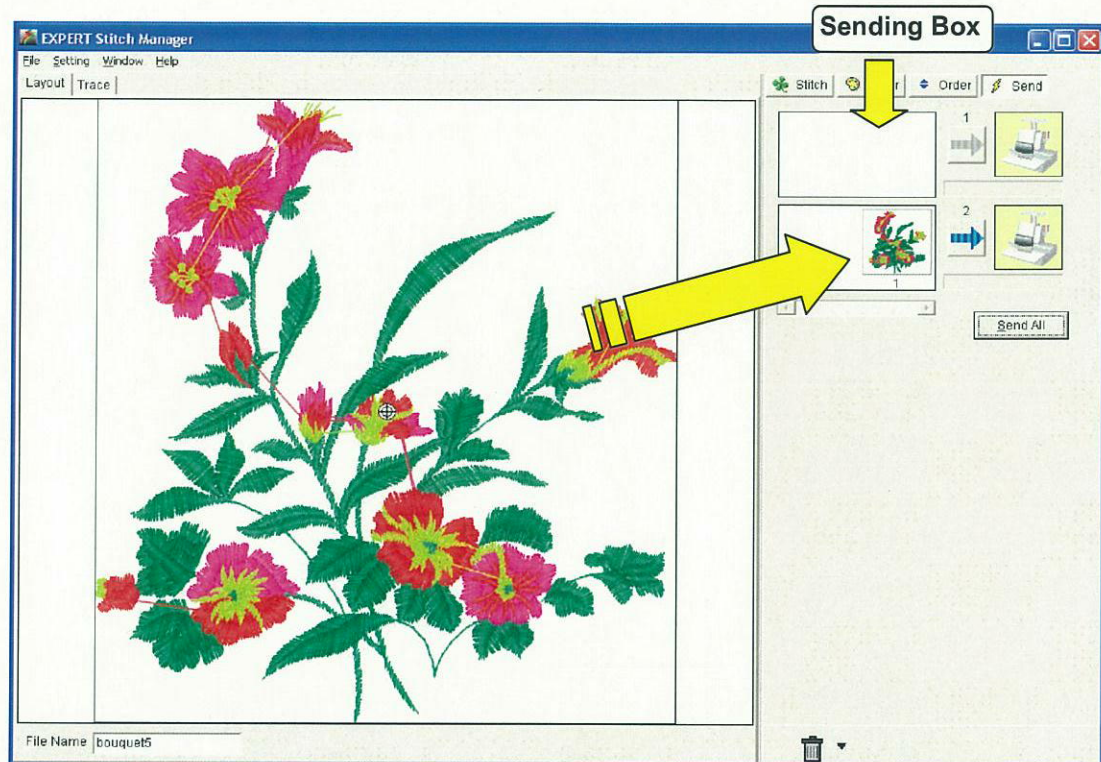
Set the machine thread color by "dragging & dropping" from stitch color list



4. Transfer the embroidery data

Click [SEND]

Move the design on the layout screen to the sending box by "dragging & dropping"



Click  mark to transfer the embroidery data to one embroidery machine.

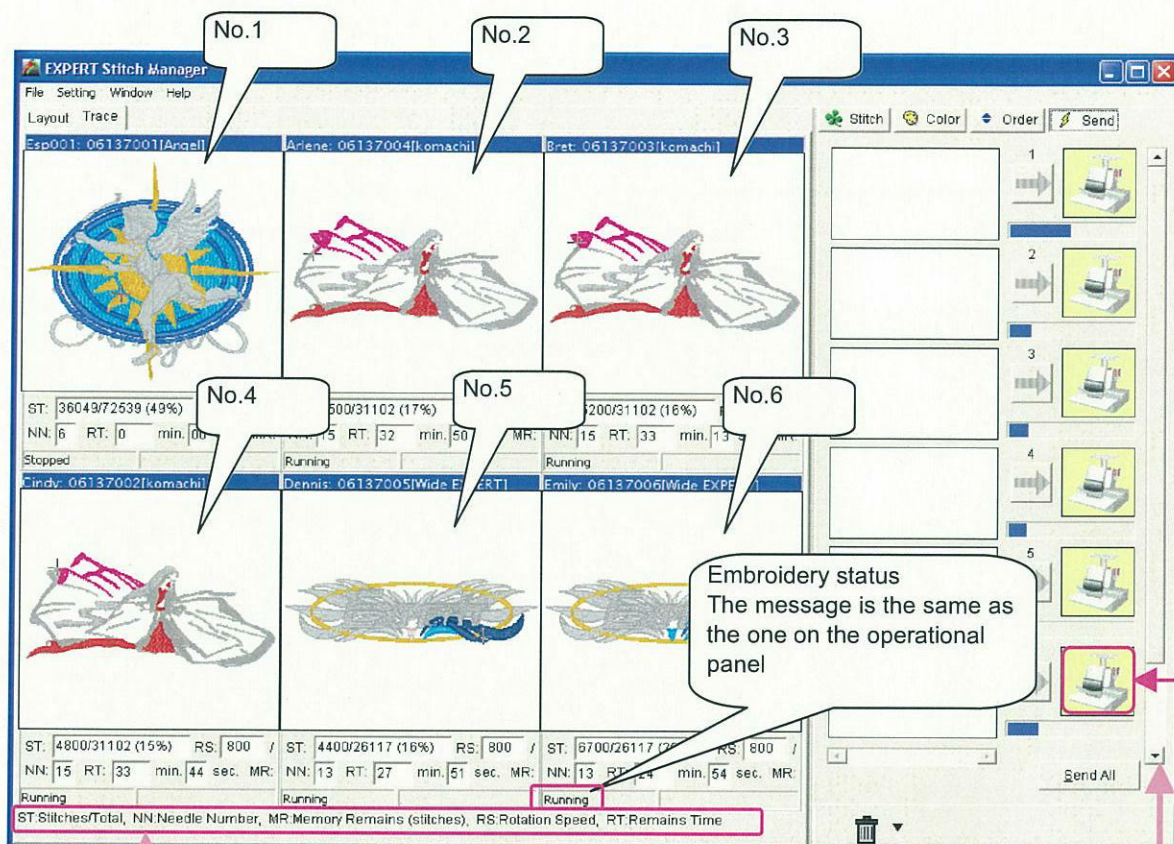
->After transferring, the data in the box is deleted.

Click [Send All] to transfer the embroidery data to all embroidery machine at once.

*The transfer of the embroidery data and setting of the needle number are done at the same time. And the embroidery machine is set for the **EMBROIDERY START** mode.

5. Monitor of on-going Embroidery

Click the [TRACE] tab.



ST (Stitch / Total) → How much embroidery is completed.
 NN (Needle bar Number) → Current needle bar number
 MR (Memory Remaining) → How much room for memory
 RS (Rotation speed) → Current rotation speed per minute
 RT (Remaining time) → Remaining time to complete

In case networking more than 7 embroidery machines, scroll bar will show up. By scrolling, the trace screen will change accordingly.

Switch OFF or Line disconnected	Switch ON or Line connected & Embroidering or Embroidering Stop	(unison mode)	Data Transferring	Error

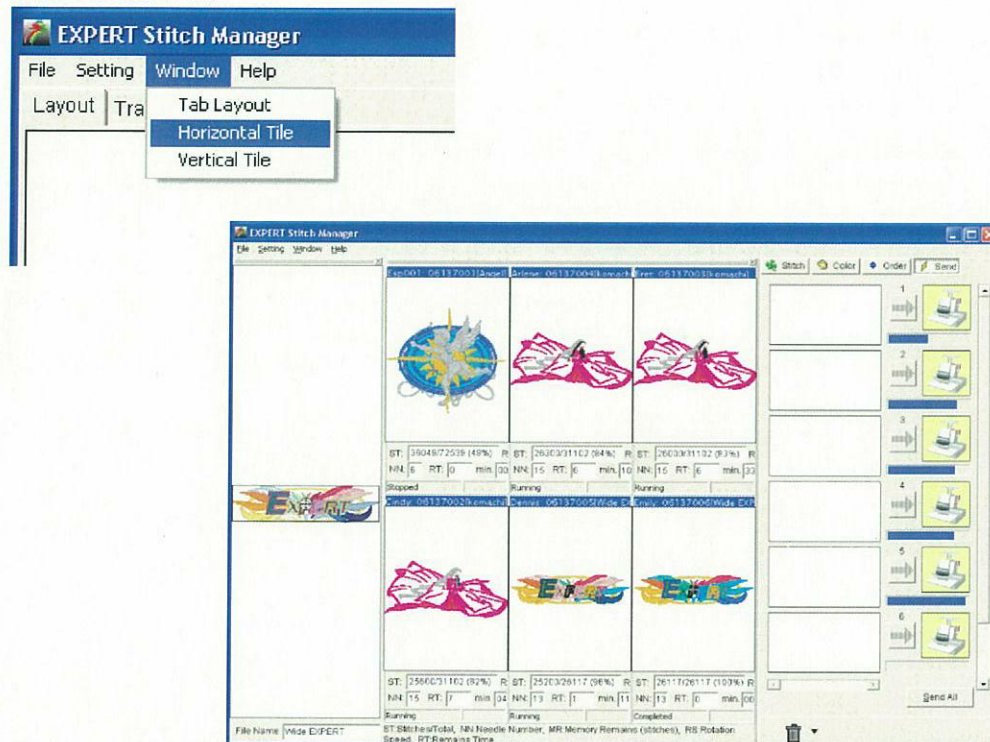
6. Finish the software

To finish the software, select [Exit] from the menu bar [File] or click close button on the upper right.

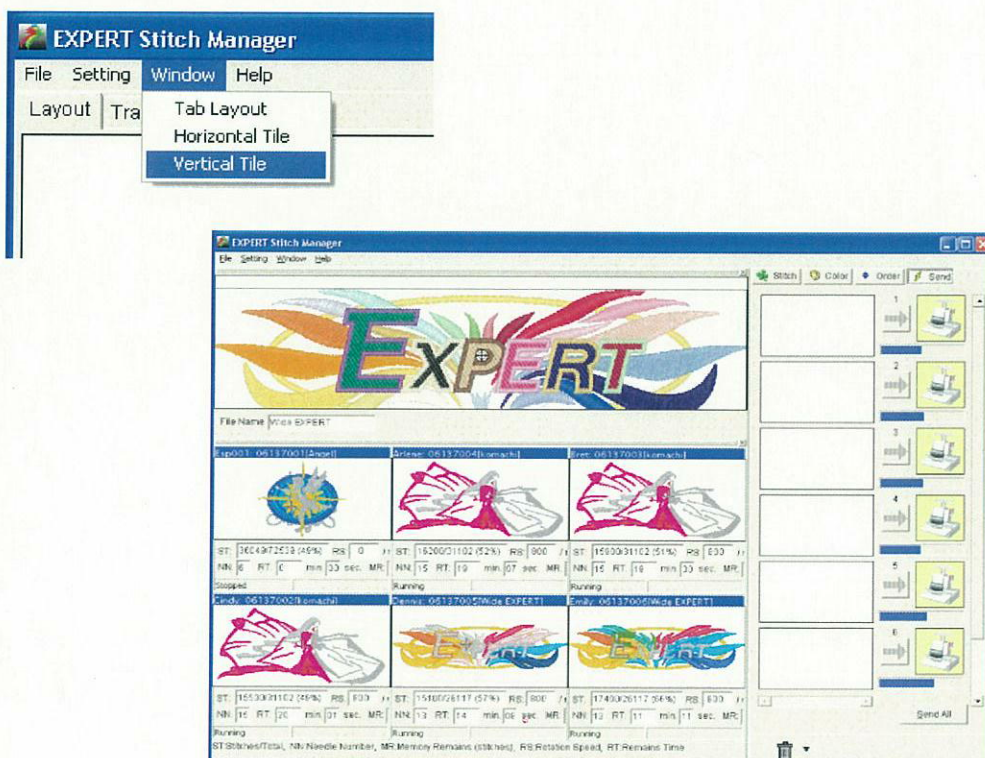
7. Other information

Change screen display

Horizontal Tile



Vertical Tile



8. Setting of embroidery machine

1) In case of connection by TCP/IP(LAN)

-- Only applicable to ESP9100NET series model

i) Turn on DS1-1, and activate the test mode.

***** TEST MODE *****
(1) PANEL Ver
(2) MAIN Ver
(3) XY Ver

ii) Select and press SET in the order of PANEL → NETWORK SETTING screen

***** PANEL *****
(1) NETWORK SETTING
(2) MAINTENANCE
(3) MEMORY INITIAL

iii) Select **LAN** as PORT.

** NETWORK SETTING *
PORT -> **LAN**
TCP/IP -> AUTO
IP ADDRESS ->[SET]

iv) Select auto or manual of TCP/IP according to the network environment.

** NETWORK SETTING *
PORT -> **LAN**
TCP/IP -> MANUAL
IP ADDRESS ->[SET]

* As to AUTO or MANUAL, please refer to "a) **Setting confirmation of TCP/IP of PC**"

* In case of AUTO, please proceed to vi)

v) In case of Manual, IP address shall be set. Please set according to the network environment.

NOTE) Subnetmask and Default gateway shall be same value as the PC installed with ESM.

Subnet mask	→	**** IP ADDRESS **** IP ->192.168. 11. 2 MASK->255.255.255. 0
Default gateway	→	GATE->192.168. 11. 1

* As to Subnetmask and Default gateway, please refer to "a) **Setting confirmation of TCP/IP of PC**"

vi) Set the number in order to recognize embroidery machine. It is possible to set from 0 to 999, and Esp will be added as affix when using ESM.

ex) In case the number is 3⇒Esp003

** NETWORK SETTING *
TCP/IP -> AUTO
IP ADDRESS -> [SET]
MACHINE NO.-> 3

vii) Return to the PANEL screen by pressing SET key.

***** PANEL *****
(1) NETWORK SETTING
(2) MAINTENANCE
(3) MEMORY INITIAL

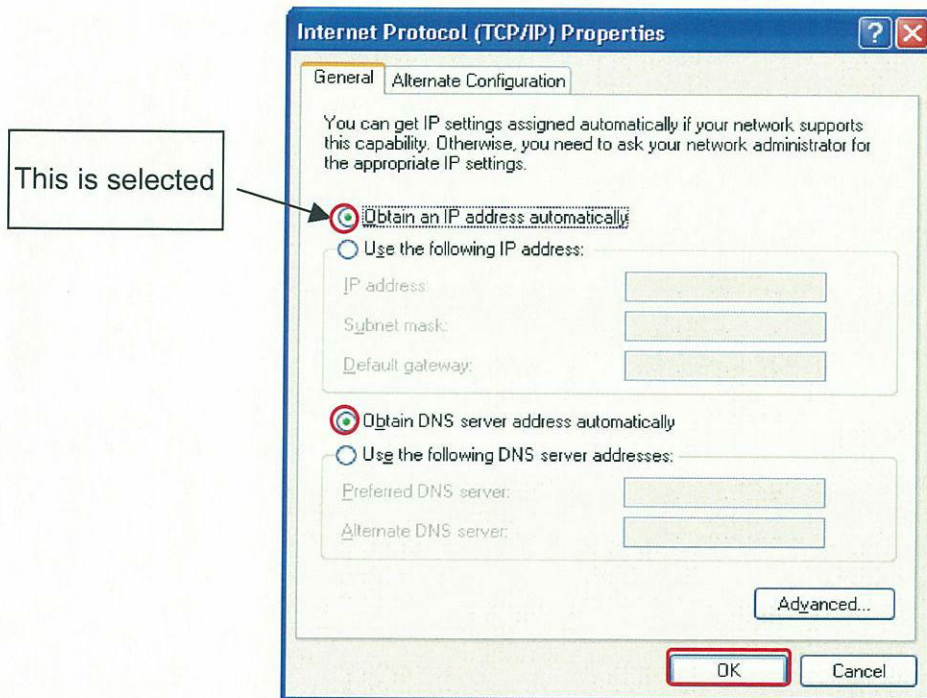
viii) Turn off DS1-1.

Reboot the power, after DS2-8 is set to OFF.

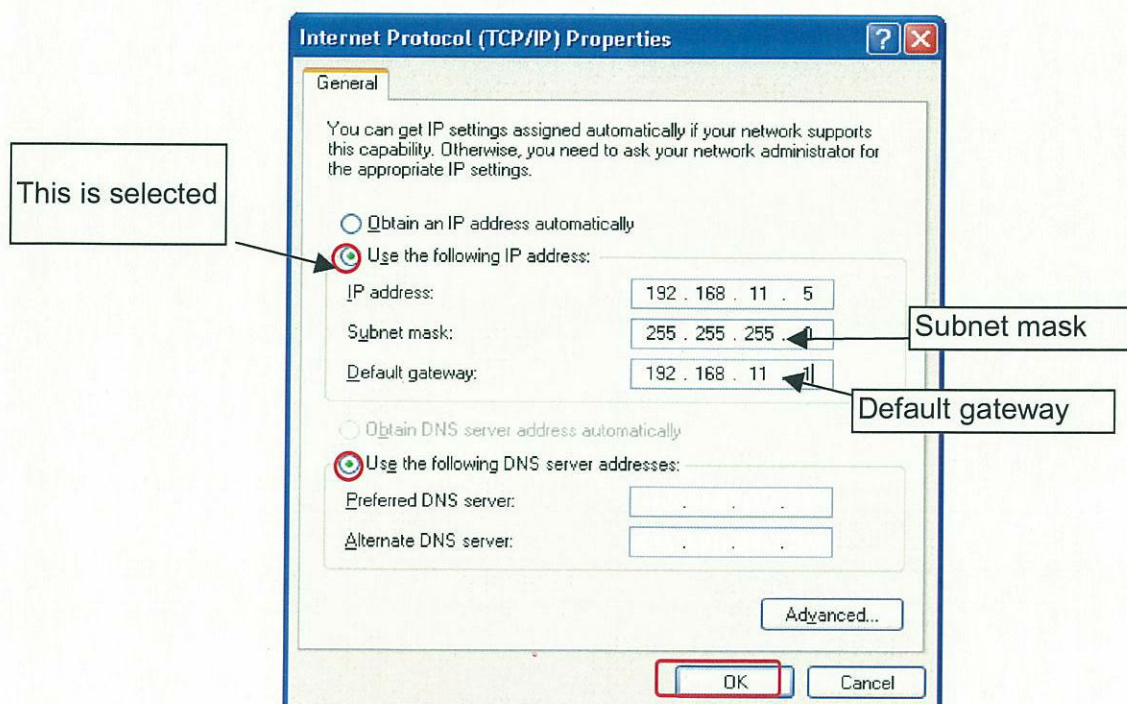
a) Setting confirmation of TCP/IP of PC

Confirm the setting of TCP/IP of PC that ESM is installed

1) In cse of auto-setting of TCP/IP



2) In cse of manual-setting of TCP/IP



2) In case of connection by Serial (COM) port -- ESP9100NET series model

i) Turn on DS1-1, and activate the test mode.

***** TEST MODE *****

- (1) PANEL Ver
- (2) MAIN Ver
- (3) XY Ver

ii) Select and press SET in the order of PANEL⇒NETWORK SETTING screen

***** PANEL *****

- (1) NETWORK SETTING
- (2) MAINTENANCE
- (3) MEMORY INITIAL

iii) Select **COM** as PORT and set COM SPEED.

Note) In case multiple machines are connected, please set the speed all the same

** NETWORK SETTING *

PORT -> **COM**
COM SPEED -> 38400
MACHINE -> *TEL

iv) Return to the PANEL screen by pressing SET key

***** PANEL *****

- (1) NETWORK SETTING
- (2) MAINTENANCE
- (3) MEMORY INITIAL

v) Turn off DS1-1.

Reboot the power, after DS2-8 is set to OFF.

3) In case of connection by Serial (COM) port -- ESP9000 series model

1) Turn on the power with DS2-8 set to ON

2) Go to the NETWORK SETTING screen by pressing Function key

3) Set the COM SPEED

Note) In case multiple machines are connected, please set the speed all the same.

*** FUNCTION MENU **

A.TRIM TMNG -> + 0
B.COM SPEED -> 38400
C.MACHINE -> *TEL

4) Return to embroidery screen by pressing SET key